



Application User Guide

AUG 061 / Rev. 1.0

eWON Geolocation

Discover how to set up the geolocation feature of your eWONs and retrieve the information in eCatcher.



Table of Contents

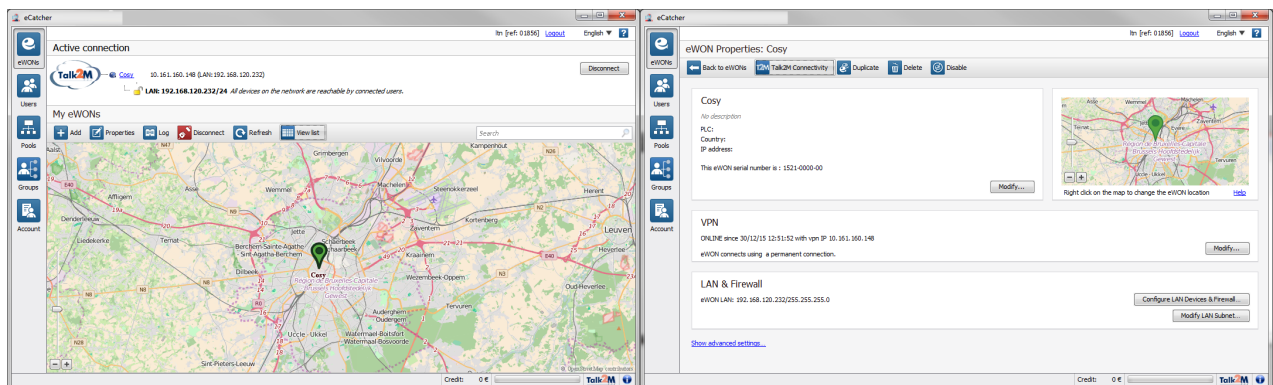
- 1. Geolocation of eWONs 3**
- 2. Manual positioning 4**
- 3. Disabling geolocation 5**
 - Disable all the eWONs 5
 - Disable a single eWON 5
 - Cosy 131 5
 - Flexy 6
- Revision 7**
 - Revision History 7

1. Geolocation of eWONs

Starting eWON firmware v1.1, it is possible to locate your eWON based on its WAN connectivity.

Talk2M computes the location of eWONs as follow :

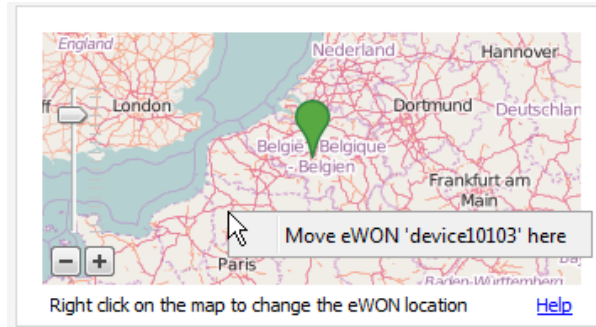
1. If the eWON has a 3G modem, Talk2M tries to locate the eWON according to 3G antennas data. If the location of the eWON cannot be computed this way, it switches to use one of the following methods.
2. If the eWON is using WiFi connectivity, Talk2M tries to locate the eWON according to available WiFi data. If, again, the location of the eWON cannot be computed this way, it switches to the last option.
3. Otherwise, Talk2M tries to locate the eWON according to its public IP address. This geolocation method is less accurate than the previous ones. This means that the eWON may be located in the center of the country.



2. Manual positioning

The eWONs which are not correctly located can be positioned manually using the following process:

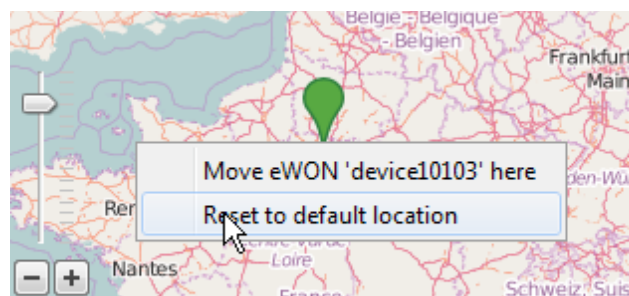
- In the eWON property view, the eWON is displayed on a small map. Right clicking on the map allows the positioning of the eWON.



- In the eWONs list, click the “view Map” toolbar button to display a map where all the eWONs of the account are located. Select the eWON and right click on the map to position the eWON. Note that the search field can be used to view only the concerned eWON.



To remove the manual position and reset to the position computed by Talk2M, go to the properties page of this eWON, right click on the map and select the “Reset to default location” option.



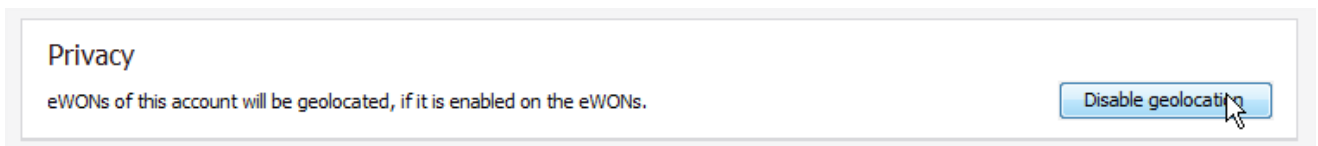
3. Disabling geolocation

The geolocation of eWONs can be disabled for all the eWONs of an account or for some of them.

When geolocation is disabled, no geolocation information is computed by eCatcher.

Disable all the eWONs

To disable the geolocation of all eWONs of the account, go to the Account page in eCatcher, click on the 'Advanced settings' link, click on the 'Disable geolocation' button:

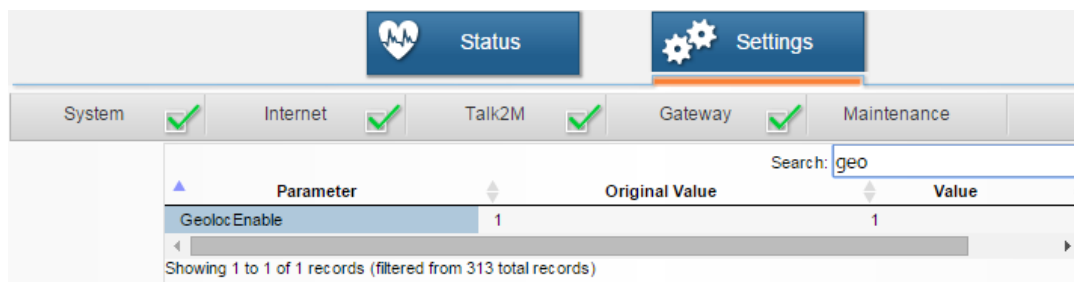


Disable a single eWON

Cosy 131

To change the state of this feature, follow these few steps:

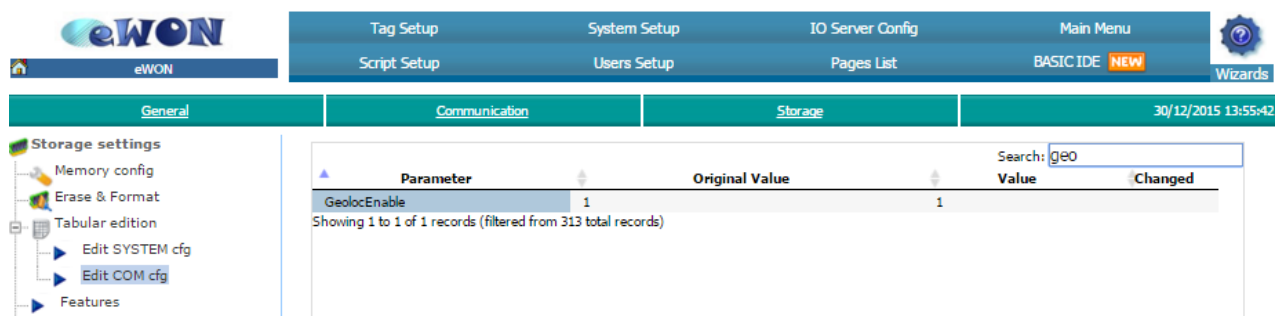
- Click on the “Settings” button
- Go inside the “Maintenance” tab
- Display the advanced options by checking the relevant box
- Edit the COM configuration
- Search for the “GeolocEnable” parameter
- Change the value by double clicking the row
 - 1: Geolocation is enable
 - 0 : Geolocation is deactivated



Flexy

To change the state of this feature, follow these few steps:

- Click on “Configuration” tab
- Click on “System Setup” tab
- Click on “Storage” sub-tab
- Deploy the “Tabular edition”
- Edit the “COM cfg” file
- Change the value by double clicking the row
 - 1: Geolocation is enable
 - 0 : Geolocation is deactivated



Parameter	Original Value	Value	Changed
GeolocEnable	1	1	

Showing 1 to 1 of 1 records (filtered from 313 total records)

- Note -

After enabling geolocation for an account, it may take some time before the system recomputes the positions of the eWONs.

And after enabling the geolocation in the configuration of the eWON, the connection of the eWON to Talk2M must be restarted.



Revision

Revision History

Revision Level	Date	Description
1.0	30/12/2015	Original Document

Document build number: 12

Note concerning the warranty and the rights of ownership:

The information contained in this document is subject to modification without notice. Check <http://ewon.biz/support> for the latest documents releases.

The vendor and the authors of this manual are not liable for the errors it may contain, nor for their eventual consequences.

No liability or warranty, explicit or implicit, is made concerning the quality, the accuracy and the correctness of the information contained in this document. In no case the manufacturer's responsibility could be called for direct, indirect, accidental or other damage occurring from any defect of the product or errors coming from this document.

The product names are mentioned in this manual for information purposes only. The trade marks and the product names or marks contained in this document are the property of their respective owners.

This document contains materials protected by the International Copyright Laws. All reproduction rights are reserved. No part of this handbook can be reproduced, transmitted or copied in any way without written consent from the manufacturer and/or the authors of this handbook.

eWON sa, Member of ACTL Group